



**Innovation.** In our raw materials. In our solutions.

---



## **COST / PERFORMANCE**

---

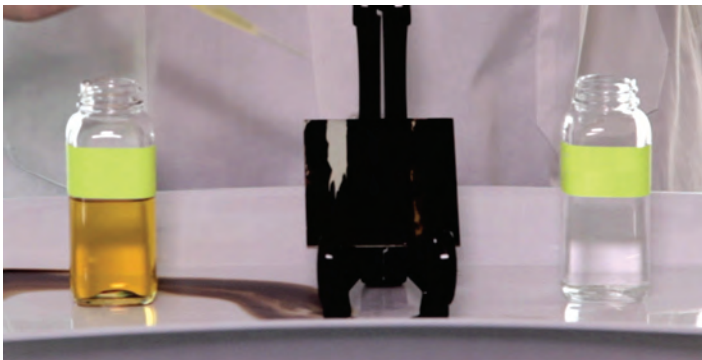
## **ENVIRONMENT / HEALTH & SAFETY**

---

## **PERFORMANCE**

---

### **Bitumen Removal**



▲  
175

▲  
7.5% d-limonene  
in mineral spirits

## **USES & APPLICATIONS**

---





**Innovation.** In our raw materials. In our solutions.

---

## SUGGESTED STARTING FORMULATIONS

---

\* denotes Vitech product

## iDATA<sup>SM</sup> assist

### Need assistance in developing a custom solution?

Vitech has a full-service lab that can collaborate with you and help you meet your cost, performance and environmental objectives! **Click the HELP! icon** and let us earn the right to invest in your success!



## PRODUCT SPECIFICATIONS

---

## PACKAGE & HANDLING

---

## REGULATORY / TOX INFORMATION

---